

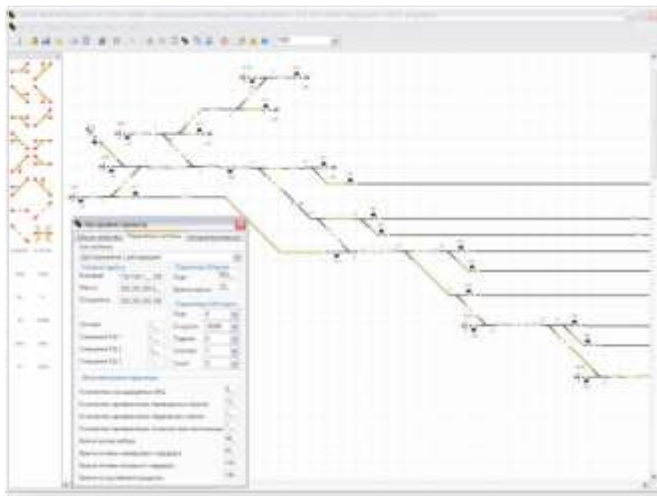


MPC-I CAD SOFTWARE

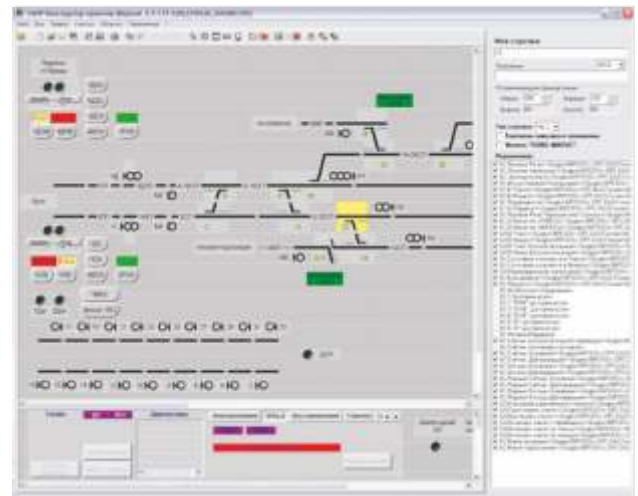
Created to assist designers and customers of MPC-I.

CAD significantly reduces design efforts and allows trained and authorized personnel on site to adjust MPC-I software in case changes to the station layout were made.

This feature significantly reduces the impact of the human factor as well. Operators are given two options for reconfiguration of the system – using designing capabilities of R&D Company Promelectronica and independent adaptation within the limits of introduced changes using MPC-I CAD software in cooperation with the Service Center of R&D Promelectronica.



Adaptation of the middle level of MPC-I



Adaptation of the upper level of MPC-I